

KASHO
火匠



The Ultimate Edge for Professionals



CONTENTS

- 02 About KAI
- 03 The KASHO symbol
- 04 The KASHO shears
- 05 Shears design
- 06 Millennium Series
- 08 XP Series
- 09 Disc Operation System
Ergonomic Design
- 10 Green Series
- 12 Ivory Series
- 14 Blue Series
- 16 Design Master Series
- 18 Designing Razors
- 19 Accessories
- 20 Kasho Technology
- 21 Care Instructions

"Shears" is a North American term for scissors.



:: CREATING THE FUTURE
WITH CUTTING EDGE TECHNOLOGY ::



1908-2008



Headquarters Tokyo, Japan

In a history dating back over 100 years, the KAI group, based in Tokyo, is renowned for its superbly functional, incisive and durable cutting tools and related products.

These traits have positioned KAI's products among the world's best. The common denominator - quality and perfection - is based on the centuries-old tradition and culture of the Japanese Samurai sword smithy.

KAI's product line consists of over 10,000 different items, positioning the KAI group among the leading cutlery manufacturers worldwide.

By expanding its overseas network in various countries in various forms, KAI is promoting globalization in order to contribute to the world as an international company.



:: KASHO -
THE SYMBOL OF CRAFTSMANSHIP ::

The KASHO hand-crafted Professional Hair Stylist Shears are the crowning achievement of the “shisho”, a highly skilled craftsman who proudly engraves his shears with the KASHO mark.

Each pair of the KASHO shears reflects impeccable form, finish and function. Today, every pair of the KASHO shears is created through careful design and engineering with advanced materials and heat-treatment technology – and the blending of an integrated manufacturing process with skilful workmanship which measures up to the unrelenting standards passed through generations of the Japanese Samurai sword smithies.

KASHO, [Japanese] master of (smithy-) fire | KA~fire, SHO~master



Forging craftsmanship, Japan

:: THE KASHO SHEARS ::

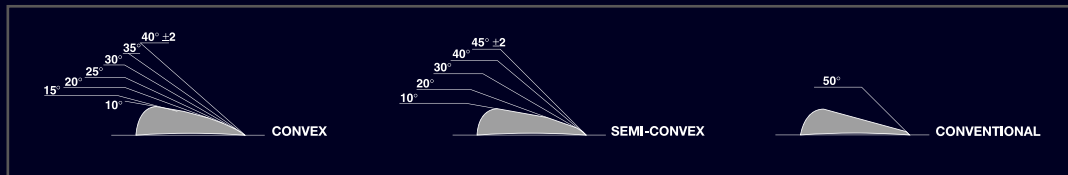
KASHO shears feature two different stainless steel alloys in order to meet the high Japanese quality demands for sharpness and material. The combination of different hardness grades means that every pair of shears is perfectly balanced and guarantees that the cutting edge is exceptionally durable. The unique "Ultimate Edge" KASHO shear blades guarantee that they are a pleasure to work with and cut accurately.

KASHO



The unique manufacturing process ensures the necessary precision of the concave inner surfaces (hollow ground) and convex outer surfaces of the shear blades. The convex-edged shear blades are characterised by their exceptionally durable cutting edge. These blades are honed to an extremely sharp state with the inner sidehollowed to such a point that the blades only touch at the point of intersection. This refined technology ensures superb cutting edge durability, while at the same time reducing cutting edgeresistance to a minimum -and thus considerably limiting hand fatigue.

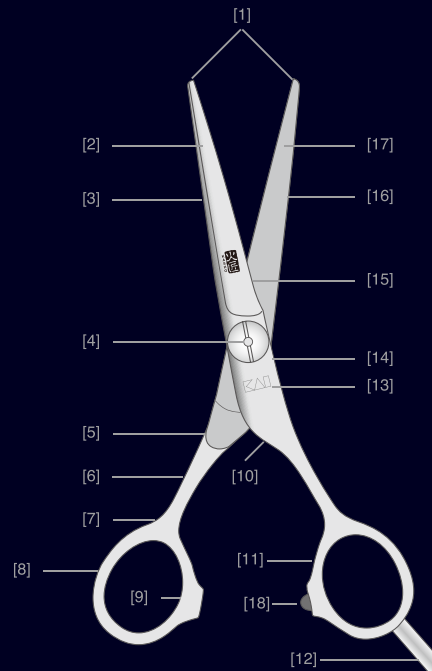
Every pair of KASHO shears is supplied with optimal tension settings; these do, however, occasionally need to be checked and readjusted as required, to ensure the durability of the cutting edge and to guarantee healthy ease of use. Most KASHO shears are therefore fitted with a tension adjustable screw to ease re-adjustment. The patented Disc Operation System ensures that the KASHO Millennium and XP Series are always perfectly tensioned.



Comparison of KASHO Convex Blade and KASHO Semi-Convex Blade with conventional blade.

:: SPECIALISED SHEARS TERMS ::

- | | |
|---------------------|------------------------|
| 1 Points | 10 Joint |
| 2 Outside Blade | 11 Ring Flat |
| 3 Back Side | 12 Finger Rest |
| 4 Screw Hole | 13 Branding |
| 5 Ride or Half moon | 14 Fore Side |
| 6 Shank | 15 Teardrop (Convex) |
| 7 Neck | 16 Hollow (Concave) |
| 8 Outside Ring | 17 Edge |
| 9 Inside Ring | 18 Silencer or Stopper |





:: Millennium Series ::

The KASHO Millennium Series represents superb craftsmanship and uncompromising quality. These exceptionally sharp, ergonomically designed hair styling scissors are made of sinter metal that is extremely resistant. The patented Disc Operation System ensures perfect, even movement and optimum tension.



KML-55 OS

>> Form: Offset (ergonomically designed)
Screw: Disc Operation System
Length: 5.5"

KML-60 OS

>> Form: Offset (ergonomically designed)
Screw: Disc Operation System
Length: 6.0"



KML-65 OS

>> Form: Offset (ergonomically designed)
Screw: Disc Operation System
Length: 6.5"

焰

MILLENNIUM SERIES

The smooth operation of these high mirror polished shear blades reduce cutting resistance to a minimum, which in turn reduces hand fatigue. The Millennium Series features a special ergonomic finger rest and is available as offset and straight designs.



KML-53 S

>> Form: Straight
Screw: Disc Operation System
Length: 5.3"

KML-58 S

>> Form: Straight
Screw: Disc Operation System
Length: 5.8"



KML-62 S

>> Form: Straight
Screw: Disc Operation System
Length: 6.2"



:: XP Series ::

The new KASHO XP Series combines the excellent features of the acclaimed Green Series with the unique Disc Operation System of the Millennium Series. Forged from the low-wear VG-10 stainless steel alloy, the XP-Series is characterised by its high durability and hardness. In the trend of ergonomically designed shears, the XP Series offers an ergonomically advanced straight design – “Semi-Semi Offset”.



KXP-53 SS

>> Form: Semi-Semi Offset
Screw: Disc Operation System
Length: 5.2”

KXP-58 SS

>> Form: Semi-Semi Offset
Screw: Disc Operation System
Length: 5.8”



KXP-63 SS

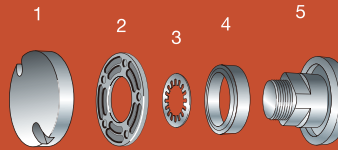
>> Form: Semi-Semi Offset
Screw: Disc Operation System
Length: 6.3”

曉

KASHO XP

The Disc Operation System:

MILLENNIUM
XP



- 1 Nut
- 2 Synthetic disc
- 3 Special spring
- 4 Enclosed ball bearing
- 5 Screw



:: The Disc Operation System ::

The outstanding features of the KASHO Millennium and the KASHO XP-Series are their exceptional quality and their unique Disc Operation System.

This sophisticated screw system consists of an enclosed ball bearing unit, a special spring and a synthetic disc that ensures uniform pressure and incredibly smooth operation.

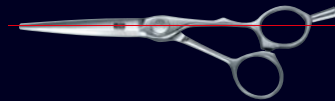
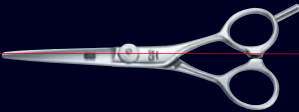
The enclosed ball bearing is free from collecting hair, dust and other substances from outside so that nothing may affect the precise movement of the shears, whilst the synthetic disc between the upper and lower blades minimises friction and wear of the blades.

Thanks to this complex Disc Operation System with a replaceable synthetic disc the Millennium and the XP-Series have a considerably longer life span than any conventional models.

:: KASHO - ERGONOMIC DESIGN ::

The KASHO Hair Styling Shears are made in three handle configurations – offset, semi-offset and straight. With the offset handle, you can work with your shoulders straight and elbow down, using minimal wrist movements. The semi-offset is a comfortable compromise between the offset and straight models.

When working with the semi-offset or offset models, the shoulders remain straight and the elbows are not raised, putting far less strain on the wrist.



[1] straight handle



[2] semi-offset handle



[3] offset handle



:: Green Series ::

The semi-offset designed Green Series is equipped with a tension adjustable screw and an integrated ball bearing. The Green Series includes the texturizers, where the teeth are so shaped by up-to-date erosion technique that each tooth meets the cutting edge at the same angle.

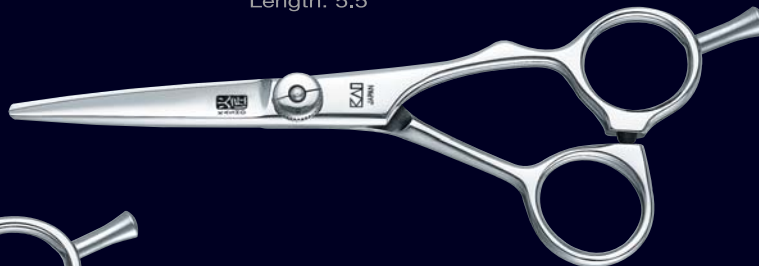


KGR-50 OS

- >> Form: Semi-Offset (ergonomically designed)
- Screw: Tension adjustable screw + ball bearing
- Length: 5.0"

KGR-55 OS

- >> Form: Semi-Offset (ergonomically designed)
- Screw: Tension adjustable screw + ball bearing
- Length: 5.5"



KGR-60 OS

- >> Form: Semi-Offset (ergonomically designed)
- Screw: Tension adjustable screw + ball bearing
- Length: 6.0"



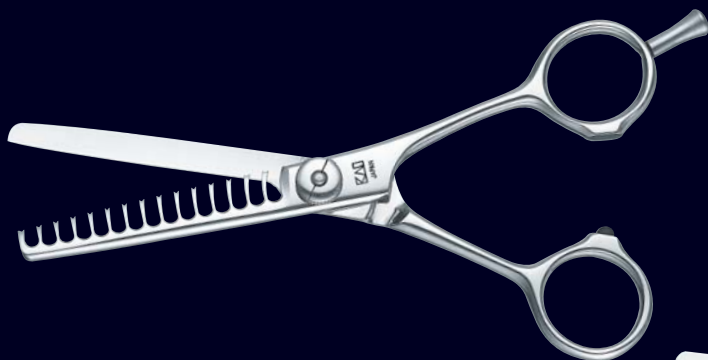
KGR-70 OS

- >> Form: Semi-Offset (ergonomically designed)
- Screw: Tension adjustable screw + ball bearing
- Length: 7.0"

翠

GREEN SERIES

The gaps between the teeth are tapered towards the inside of the teeth blade, which prevents a tangle of hair when pulling out. The convex blades are mirror polished.



KGR-55/T 30

- >> Texturizer with 30 teeth
- Screw: Tension adjustable screw + ball bearing
- Length: 5.5"

KGR-55/T 15

- >> Texturizer with 15 teeth
- Screw: Tension adjustable screw + ball bearing
- Length: 5.5"



KGR-55/T 30B

- >> Texturizer with 30 teeth, B-Type
- Screw: Tension adjustable screw + ball bearing
- Length: 5.5"

KIV



KIV-45 OS

>> Form: Offset

(ergonomically designed)

Screw: Tension adjustable screw

Length: 4.5"

KIV-50 OS

>> Form: Offset (ergonomically designed)

Screw: Tension adjustable screw

Length: 5.0"

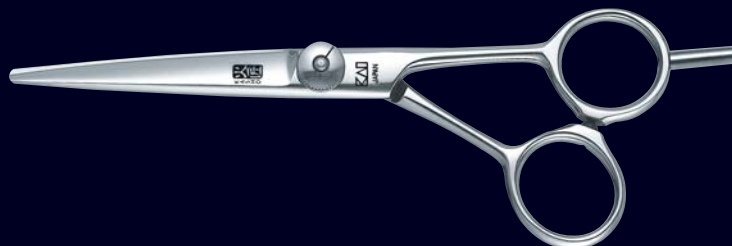


KIV-55 OS

>> Form: Offset (ergonomically designed)

Screw: Tension adjustable screw

Length: 5.5"



KIV-52 SL

>> Form: Lefty, Straight

Screw: Tension adjustable screw

Length: 5.2"



KIV-52 OSL

>> Form: Lefty, Offset

Screw: Tension adjustable screw

Length: 5.2"

淡

IVORY SERIES

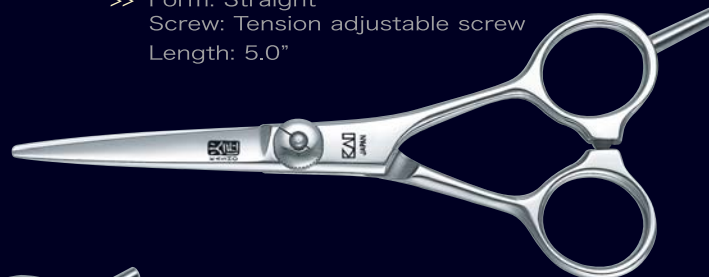
:: Ivory Series ::

The KASHO Ivory Series represents the upper middle category of the KASHO hair styling shears. The tension adjustable screw allows fine tuning of the shear tension. The Ivory Series is available in the classic, straight models as well as in the ergonomically designed offset models: both versions are also available for left-handed users. The convex blades are mirror polished.



KIV-45 S

>> Form: Straight
Screw: Tension adjustable screw
Length: 4.5"



KIV-50 S

>> Form: Straight
Screw: Tension adjustable screw
Length: 5.0"



KIV-55 S

>> Form: Straight
Screw: Tension adjustable screw
Length: 5.5"



KIV-60 S

>> Form: Straight
Screw: Tension adjustable screw
Length: 6.0"



:: Blue Series ::

The KASHO Blue Series epitomises all the advantages of Japanese shears, but is fitted with the flat head screw system. A slight split of the screw holds the screw thread firmly against the lower blade, allowing the tension of the screw to be finely adjusted. The Blue Series are available as a straight or ergonomically designed offset model. The convex blades are mirror polished.



KCB-45 OS

>> Form: Offset (ergonomically designed)
Screw: Flat head screw
Length: 4.5"

KCB-50 OS

>> Form: Offset (ergonomically designed)
Screw: Flat head screw
Length: 5.0"



KCB-55 OS

>> Form: Offset (ergonomically designed)
Screw: Flat head screw
Length: 5.5"

蒼

BLUE SERIES



KCB-45 S

>> Form: Straight
Screw: Flat head screw
Length: 4.5"



KCB-50 S

>> Form: Form: Straight
Screw: Flat head screw
Length: 5.0"



KCB-55 S

>> Form: Straight
Screw: Flat head screw
Length: 5.5"



KCB-60 S

>> Form: Straight
Screw: Flat head screw
Length: 6.0"



:: Design Master Series ::

The KASHO Design Master Series is regarded as the introductory model of a KASHO. The ratchet screw system allows variable tension setting. The Design Master Series is available as a straight or ergonomically designed offset model. The semi-convex blades are satin finished.



KDM-50 OS

>> Form: Offset (ergonomically designed)
Screw: Ratchet screw
Length: 4.5"

KDM-55 OS

>> Form: Offset (ergonomically designed)
Screw: Ratchet screw
Length: 5.5"



KDM-60 OS

>> Form: Offset (ergonomically designed)
Screw: Ratchet screw
Length: 6.0"

KDM

燧銀

DESIGN MASTER SERIES

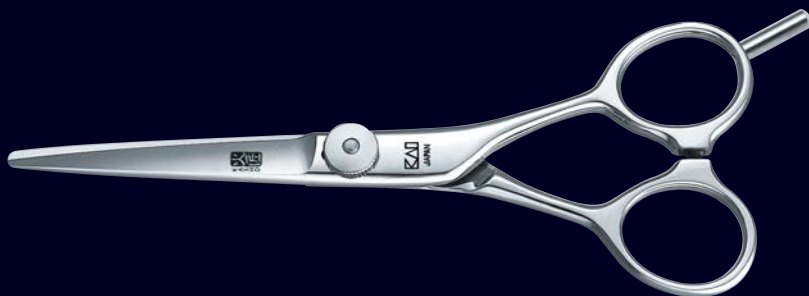


KDM-45 S

>> Form: Straight
Screw: Ratchet screw
Length: 4.5"

KDM-50 S

>> Form: Straight
Screw: Ratchet screw
Length: 5.0"



KDM-55 S

>> Form: Straight
Screw: Ratchet screw
Length: 5.5"

KDM-60 S

>> Form: Straight
Screw: Ratchet screw
Length: 6.0"





:: KASHO Designing Razor ::

The ergonomically contoured KASHO Designing Razor is an ideal tool for creative work. The exceptional sharpness of the blade, which was originally designed for use in surgery, enables accurate shaping and thinning of hair. The synthetic comb containing antibacterial and anti-static elements symmetrically forms on the both sides of the blade without gaps. Therefore it is very hygienic and free from static charge and clogging of hair. The Designing Razor is available as folding type holder and straight type holder.



B-10KB
 >> KASHO Designing Razor Blades
 Contents: 10

KCS-NH
 >> KASHO Designing Razor
 Form: folds away



KCS-SH
 >> KASHO Designing Razor
 Form: straight type

:: kasho designing razor SPEED EDGE ::



B-10KBL
 >> KASHO Designing Razor
 Speed Edge Blades
 Contents: 10 Length: 5.7cm

KCS-LH
 >> KASHO Designing Razor
 Speed Edge Holder
 Form: Straight type



SPEED EDGE : Not Available in North America

:: Accessories

ALC1017

>> Leather Shoulder Holster
210mmX160mmX45mm
Genuine Leather
Partial Imitation Leather



LC3011

>> Leather Holster (Large)
195mmX200mmX50mm
Genuine Leather



LC2011

>> Leather Holster (Small)
180mmX145mmX25mm
Genuine Leather



KAC01

>> Leather Accessory Case
218mmX115mmX25mm
Genuine Leather



LC1037

>> Zippered Leather Shear Case
235mmX120mmX30mm
Genuine Leather
Partial Imitation Leather



:: KASHO - TECHNOLOGY ::

The KASHO Hair Styling Shears are manufactured of special high-carbon stainless steel alloy which has superior resistance to corrosion and wear. The steel is variously compounded with Molybdenum, vanadium, cobalt and other elements to achieve state-of-the-art characteristics. KASHO's advanced heat treatment and sub-zero quench techniques assure long-term blade sharpness and durability.



Forging and coining



Vacuum Heat Treatment



Grinding

The KASHO's unique Ultimate Edge is made possible by its proprietary state-of-the-art manufacturing process, which enables absolute accuracy in shaping the proper curvature of both the inner concave blade surface and the exterior convex surface. Match-paired blades are meticulously hand-honed, polished to flawless lustre, and assembled by expert artisan-technicians. Total quality management is assurance of the KASHO's continuing commitment to excellence. KASHO's technical facilities include extensive computer-aided-design and test laboratories, where engineers and designers continuously advance new ideas to improve the materials, dynamics, aesthetics and manufacturing process of the KASHO Hair Stylist Shears.



Honing



Assembly



Quality inspection



:: KASHO – CARE INSTRUCTIONS ::

- The shear blades should be wiped with a clean, soft cloth or leather after every use.
- The pivot should be regularly oiled; we recommend high quality machine oil.
- To prevent possible damage to the shears, we recommend that they are always stored in a safe and dry environment and are kept closed.
- The shear tension should be regularly checked and adjusted if required.
- They should only be sharpened or re-conditioned by service agents recommended by KAI.
- KASHO shears are precision tools, and should be treated and cared for as such.

Product Specifications may be changed without notice.



As descendants of the Samurai Sword smiths with a tradition that goes back over 700 years, our expert craftsmen are as committed to the “Master of Steel” Guild as their ancestors were, and strive to live up to this image every day.

kai corporation

Beauty Care Div. International Dept.
1110 Oyana, Seki City, Gifu Pref. 501-3992 Japan
PHONE:+81(0)575-28-3134 Fax:+81(0)575-28-6911
www.kai-ind.co.jp

UNIVERSAL GROUP

6031 Malburg Way, Los Angeles, CA90058
PHONE:(323) 589-2600 Fax:(323) 589-2700
www.universalgrp.com

kai Europe GmbH

Löhndorfer Str. 51, D-42699 Solingen, Germany
Telefon:+49(0)212-232380 Telefax:+49(0)212-2323899
www.kai-europe.com

:: AUTHORIZED DISTRIBUTOR ::